



**CLAUDIUS PETERS**



# Stockyard **TECHNIK**

**We know how**

**[claudiuspeters.com](http://claudiuspeters.com)**

## About

### Contents

Stockyard & materials handling	3
Stockyard solutions	4
Storage & Reclaiming	6

Since its founding in 1906, Claudius Peters has become one of the world's most respected engineering houses and an innovative world leader. Its German engineering excellence continues to set benchmarks for the design, manufacture and commissioning of materials handling and processing systems for the gypsum, cement, coal, alumina and bulk-handling industries.

From conception and installation through to commissioning and after-sales support, Claudius Peters provides world-class service to the world's biggest material processing organisations.

The Claudius Peters Group GmbH is headquartered in Buxtehude near Hamburg, Germany, with regional offices in the Americas, Asia and Europe.



Claudius Peters group headquarters, Buxtehude, Germany.



Claudius Peters Technologies SAS, Illzach, France, technology centre, Stockyards.

### Claudius Peters Technologies SAS

In addition to its role as Claudius Peters' product representative in french speaking territories, Claudius Peters Technologies SAS leads the global material handling activities of the group with its own PHB Someral product range.

Bringing over 40 years experience in designing material handling equipment, PHB Someral became part of Claudius Peters Group in 1993.

### Providing tailor-made solutions:

- **State-of-the-art PHB Someral bulk handling systems provide reliable, cost effective solutions for the storage of most dry bulk materials**
- **PHB Someral design the best equipment configurations to maximize storage capacity within available space**
- **Claudius Peters Technologies offers the optimum combination of French engineering and German expertise**



Circular storage, gypsum.



Bucket excavator, clay.



Portal reclaimer, fertilizer.

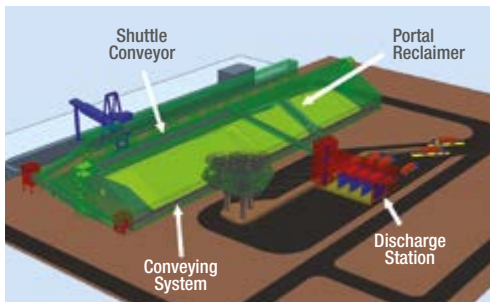


# stockyard & materials handling

## Integrated systems

From single stackers to complete system solutions, including design and installation, PHB SOMERAL storage systems can form an integral part of a larger material handling installation comprising conveying networks, bagging and palletising stations, wagon and truck loading points and shiploaders.

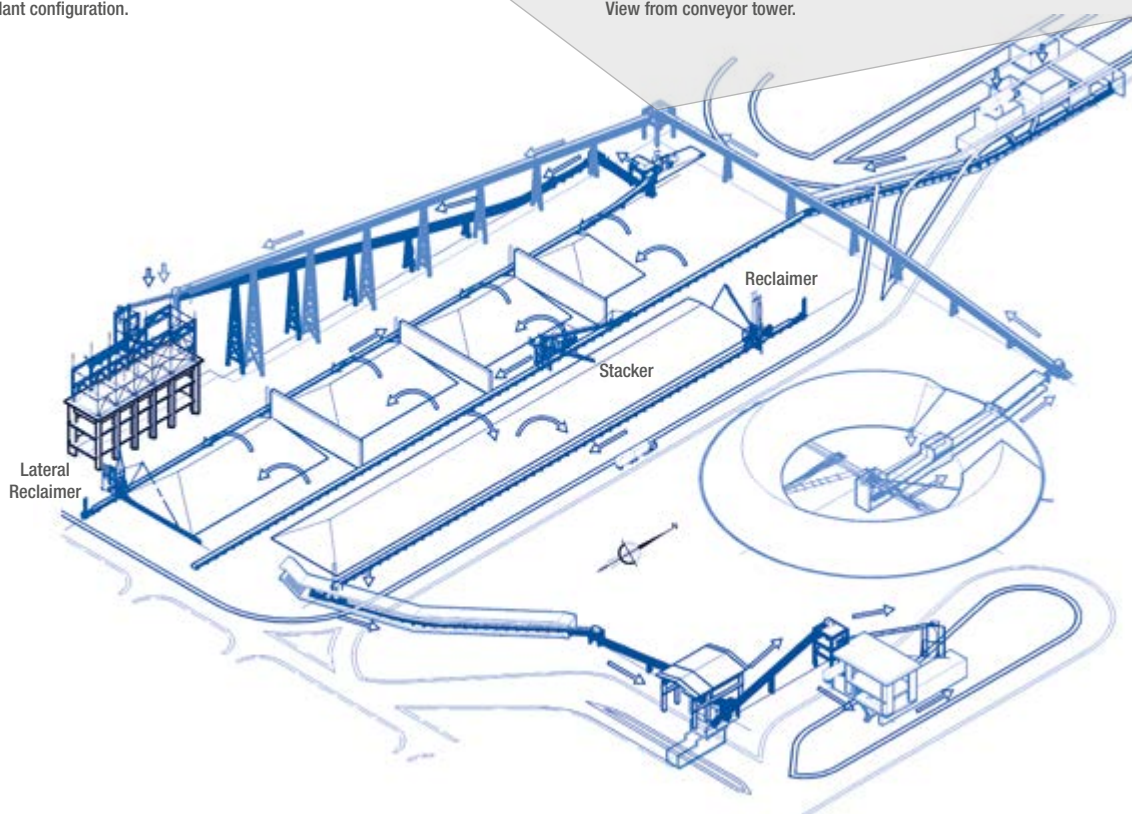
As a result the PHB SOMERAL system becomes the key element in a completely automated material-handling package, operating through a local network, with a central, ergonomic design.



Typical plant configuration.



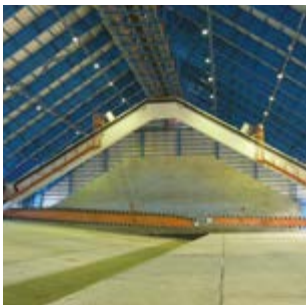
View from conveyor tower.



# stockyard solutions



Bridge reclaimer for limestone.



Portal reclaimer for fertilizer.



Stacker for limestone.



Circular blending bed for cement raw mix.

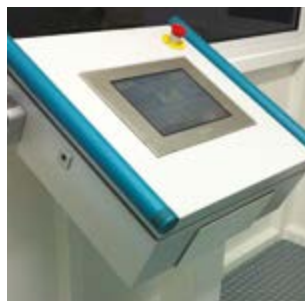
Claudius Peters always proposes the most economic and optimized solutions for clients' projects, balancing product characteristics (grain size, moisture content, blending or homogenization) with the best combination of machinery, civil works (w/o discharge wall, pit, building, etc) and available plant space.

## Typical Capabilities:

- **Piles: up to 50m width & 500m length**
- **Belt conveyors : 150 tph to 3500 tph up to 10km long**
- **Stackers: 50 tph to 3500 tph (boom up to 40m)**
- **Reclaimers: 50 tph to 2500 tph (rail distances up to 55m), depending on machine type**

## Drivers' cabins

All Claudius Peters machines are supplied with fully equipped drivers' cabins including PLC, HMI, air conditioning, cables, cable reels, junction boxes, and lighting. Fiber optics, ATEX and pressurized cabins are available on demand.



HMI desk in drivers' cabin.

## Pile types

## Stacking modes

## Stacking types

## Reclaiming modes

### Lateral

- **Travel above the piles**
- **Also suitable for sticky products**



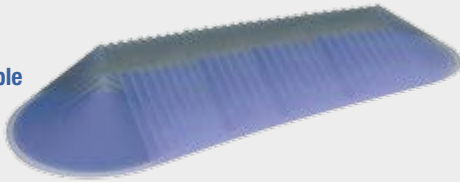
### Frontal

- **Suitable for product blending**



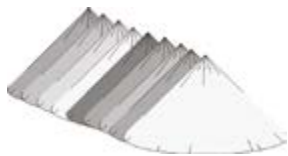
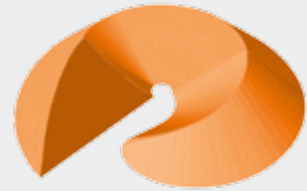
## Linear

- Pile extension possible
- Allows storage of different products



## Circular

- Low footprint
- High homogenization



**Cone Shell:** Succession of cones



**Chevron:** Each layer discharged on top of preceding layer



**Chevcon:** Circular chevron



**Windrow:** Linear parallel superimposed layers

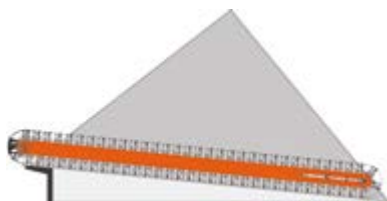
**Tripper car:**  
Limit the building width



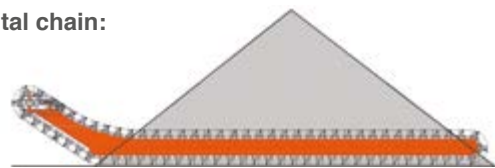
**Stacker:**  
Indoor/outdoor, travelling, luffing & slewing



**Inclined chain:**



**Horizontal chain:**



Side reclaimer



Semi-porta reclaimer



Porta reclaimer (1 arm)



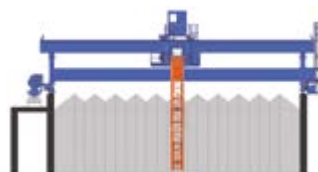
Porta reclaimer (2 arms)



Circular stockyard



Bridge reclaimer



Reclaimer excavator



Circular stockyard



# storage & reclaiming

Leading edge  
technology for  
optimum efficiency

## PHB SOMERAL product range:

- Portal, semi-portal and side reclaimers
- Bridge reclaimers
- Travelling and slewing stackers
- Circular and longitudinal stockyards
- Belt conveyors
- Design, engineering, manufacturing, installation and start-up
- Spare parts and after sales service

## Application sectors:

- Cement plants
- Power plants (coal-biomass)
- Fertilizer industry
- Petrochemicals
- Paper industry
- Port terminals
- Train or truck loading and unloading
- Mines



Portal reclaimer, fertilizer, 2200 tph, Morocco.



Conveyors, phosphates, 1200 tph, Morocco.



Longitudinal blending bed bridge reclaimer, limestone, 300 tph, Qatar.

#### Materials handled:

- Limestone, shale, iron ore, clay, alumina, bauxite, marl, sand, bentonite
- Coal, petcoke, lignite, FGD gypsum
- Phosphates, urea, TSP, DSP, MOP, phosphogypsum, sulphur
- Wood pellets, bagasse, wood chips, bio solid fuel
- And many others

#### Services:

- Supply of single stackers / reclaimers to turnkey projects
- Plant revamping
- Provision of complete handling plant solutions
- Supply of indoor and outdoor products
- Supply of steel structures or detailed drawings only

Stockyard  
solutions for every  
conceivable need



Portal reclaimer, coal, 1200 tph, Vietnam.



Bucket reclaimer, shale, 120 tph, USA.



Circular stockyard for woodchips, 800 tph and 350 tph, Finland.



Stacker, mix of clay and limestone, 1200 tph, Algeria.



Reclaimer, coal, 150 tph, Croatia.



**Claudius Peters Projects GmbH**

Schanzenstraße 40  
DE-21614 Buxtehude, **Germany**  
T: +49 4161 706-0  
E: projects@claudiuspeters.com

**Claudius Peters Technologies SAS**

34 Avenue de Suisse  
F-68316 Illzach, **France**  
T: +33 3 89 31 33 00  
E: technologiesSAS@claudiuspeters.com



CALCINING  
COOLING  
DISPATCH  
DOSING  
DRY BLENDING  
DRYING  
GRINDING  
PACKING  
PNEUMATIC CONVEYING  
PULVERIZED FUEL SUPPLY  
SILO SYSTEMS  
STOCKYARD SYSTEMS  
ALUMINA HANDLING SYSTEMS  
MARINE POWDER HANDLING  
TURNKEY PROJECTS

**Claudius Peters (do Brasil) Ltda.**

Rua das Figueiras, 474 - 3º andar - Edifício  
Eiffel - Bairro Jardim - 09080-300 - Santo  
André / SP, **Brazil**  
T: +55 (11) 4903 9230  
E: brasil@claudiuspeters.com

**Claudius Peters (China) Ltd.**

Unit 1706-1706,  
17/F Laws Commercial Plaza,  
788 Cheung Sha Wan Road,  
Lai Chi Kok, Kowloon, **Hong Kong**  
T: +852 2544 1848  
E: hongkong@claudiuspeters.com

Branch Office:  
7/F, Office Block, Hong Kong Macau Centre,  
No. 2 Chaoyangmen Bei Da Jie,  
Beijing 100027, **P. R. China**  
T: +86 10 6501 3831  
E: beijing@claudiuspeters.com

**Claudius Peters (India) Pvt. Ltd.**

Unit 408, 4th Floor, Peninsula Plaza,  
A/16 Fun Republic Lane, Off Link Road,  
Andheri West, Mumbai 400 053, **India**  
T: +91 (22) 2674 0045  
E: india@claudiuspeters.com

**Claudius Peters (Italiana) srl**

Via Verdi 2, I-24121 Bergamo, **Italy**  
T: +39 0 35 237 196  
E: italiana@claudiuspeters.com

**Claudius Peters (România) S.R.L.**

Str. Oituz Nr. 25C, et 2, 550337 Sibiu,  
**România**  
T: +40 (0) 369 407 036  
E: romania@claudiuspeters.com

**Claudius Peters (Asia Pacific) Pte. Ltd.**

25 International Business Park,  
#01-65/66 German Centre,  
**Singapore** 609916  
T: +65 6562 9100  
E: asiapacific@claudiuspeters.com

**Claudius Peters (Ibérica) S.A.**

Paseo de la Habana, 202 Bis B,  
E-28036 Madrid, **Spain**  
T: +34 91 413 36 16  
E: iberica@claudiuspeters.com

**Claudius Peters (UK) Ltd.**

Unit 10, Thatcham Business Village,  
Colthrop Way, Thatcham, Berkshire,  
RG19 4LW, **United Kingdom**  
T: +44 (0) 1635 872139  
E: uk@claudiuspeters.com

**Claudius Peters (Americas) Inc.**

445 W. President George Bush Highway  
Richardson, Texas 75080, **USA**  
T: +1 972 386 4451  
E: usa@claudiuspeters.com

**We know how**

**claudiuspeters.com**

CP Stockyard Technik (GB) 11/2014 / Issue 1. Due to a policy of continued improvement, we reserve the right to change any specification without prior notice. ERRORS & OMISSIONS EXCEPTED. Printed on a Manroland R700 press.

